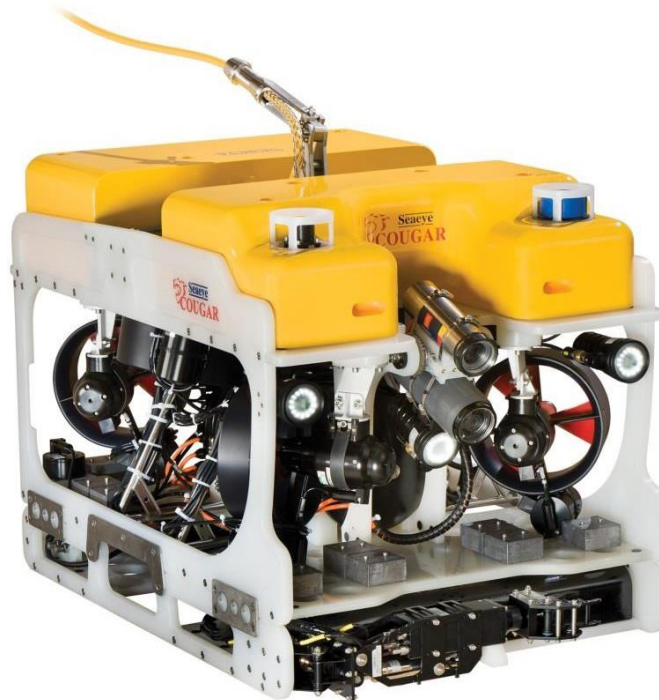


The shallow water inspection vehicle with outstanding current handling capability

The Cougar-XT Compact, depth rated to 300m, is the shallow water version of the Cougar-XT. An extremely powerful vehicle, the Cougar-XT Compact is ideal for inspection applications where strong tidal currents are experienced.

The smaller chassis significantly reduces drag, which, in combination with a high-performance thruster arrangement and a small diameter tether, offers unrivalled performance for its size and class.



Outstanding Performance

Shallow water inspection vehicle with proven handling capabilities in strong currents and in tight spaces.

Compact

Low profile and lightweight designed to reduce drag and minimise the effect of current.

Wide choice of tooling

Selection of tooling options designed for easy integration and to deliver results for any shallow water project.

System Overview

- Surface Power Supply Unit and Surface Control Unit supplied as free standing units or fitted inside an air conditioned control container. An additional tooling power supply option is available.
- Surface Equipment includes Hand Control Unit, keyboard and two colour monitors. Additional hand control units are included with ROVs fitted with a manipulator system.
- Cabin Junction Box for connections between the surface and subsea.
- Fibre Optic MUX with Video, Serial Data and Ethernet interfaces. Additional MUX options available.
- Operated as a free-swimming ROV for depths up to 300m.
- ROV rated to 1500m fitted with four horizontal thrusters and two vertical thrusters supplied with 500 Volts DC. The ROV pod provides interfaces for Thrusters, LED lights, multiple cameras, a depth sensor and a solid state compass, supporting vehicle auto heading and auto depth. Auto altitude is available as an option when an altimeter is fitted.
- Deployment options include an electric winch for free swimming ROV configuration.



Technical Specifications

General

System Power Requirements	3-phase, 380-480 VAC 50/60Hz
Depth Rating	300m
Dimensions (LxWxH)	1300mm x 900mm x 784mm
Standard Launch Weight	Approximately 270 kg
Payload (Base / Std)	Approx. 60kg (bare ROV)

Mechanical

Safe Working Load	457kg @ Sea State 6
Through Frame Lift	187kg @ Sea State 6

Performance

Forward Speed	3.5 knots
Thrust Forward	170 kgf
Thrust Lateral	120 kgf
Thrust Vertical	110 kgf

Standard Instruments

Tilt	24VDC, PWM Control, Pressure Compensated
Lighting	4x 110VAC LED Lamps, Dimmable Daylight White 3520 Lumens
Depth Sensor	300 Bar, +/-0.01% FS accuracy
AHRS	Magneto-resistive Heading: 1.0° Typical Pitch/Roll 0.4° Typical

Hydraulic Tooling

Optional Hydrolek Gauntlet Plus 4 Function Manip skid (see Options Section)	
Optional Skid based Water Jetting System (see Options Section)	

Video and Electrical Interfaces

Data Link	Single Mode Fibre with CWDM Spare Fibre within ROV JB for Survey/Video
Video Camera Interfaces	-3x SD (Composite) CAM 1 & 2 share a live feed via Video Relay in EPOD CAM 3 is permanently live and includes Tri State Zoom/Focus interface
Sensor Interfaces	Depth, Compass and Altimeter (compass sensor is in an external pod) CP Probe (Contact and Proximity Modes Supported) Sonar, 24VDC, Twisted Pair comms 1x Aux, 24VDC, RS232 & Twisted Pair comms 1x Aux, 24VDC, RS232 & Aux Tilt Drive 1x Aux, High Capacity 24VDC, RS232 & 1GB Ethernet 1x Aux, High Capacity 24VDC, RS232
Light Interfaces	2x 110 VAC Interfaces supporting Saab Seaeye LED Lamps: each supports 2x Lamps via Y-Leads

Surface Equipment

Standard Surface Control Equipment	PDU with: <ul style="list-style-type: none"> - Split DC for redundancy - Built in proprietary Overlay) - Control PCBs for ROV/TMS
	Hand Controller, Keyboard,
	Telemetry Monitor
	2x Monitors

Power Supply Units

ROV PSU	1x ROVPSU @: 500-600Vdc 35A, 240/440Vac each
Optional Tooling PSU	9kW 440-720Vac OUTPUT (see Options)

Options, Tools and Accessories

Mux Upgrade:
Adds a 2nd
Mux to the
ROV EPOD,
providing:

2nd GB Ethernet Aux with a high
capacity 24VDC.
2x SD Composite Video Interfaces
Serial Data Channels to each Camera
interface.



Cleaning brush incorporating a
heavy duty brush and SM7 thruster
motor fitted.



High resolution SD composite cameras,
colour and monochrome / low light, fixed
and zoom / focus



Additional three phase power supply
unit used to power tooling options



High Definition (HD) camera for vehicle.



Cathode Potential Probe with either
contact or proximity probe options
available



Multi Beam Imaging Sonar and surface
equipment options



Ultrasonic thickness system available
to determine the level of corrosion
present in a structure.



Scanning Sonar and surface equipment
options



Battery-operated Xenon emergency
strobe used to locate the ROV.



Altimeter for measuring the height of the
vehicle above the sea floor
Auto Altitude option available



Acoustic tracking system to calculate
the position of vehicle fitted with an
acoustic beacon.



Four-function Skid Mounted 250VDC
manipulator system



Control cabin options include video
recording units, video matrix switcher,
communication systems, and high-
back pilot seat.



Water Jet System using a high power
water pump.

Deployment Systems and Control Cabins



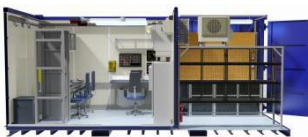
Electric Winch with variable speed and direction controls.



Running Lock Latch system used for launch and recovery to reduce the strain on the umbilical. Includes a latch release line to free the vehicle from the lock latch.



Safe Area Control Cabin (16 ft) fitted with electric power distribution panels, lighting, and air conditioning. A Zone II upgrade option is available.



Safe Area 20ft split Control Cabin with a Pilot Control section and a separate high voltage PSU section. Fitted with electric power distribution panels, lighting, air conditioning, heating and 19 inch racks. An optional installed escape hatch is available as is a Zone II upgrade.